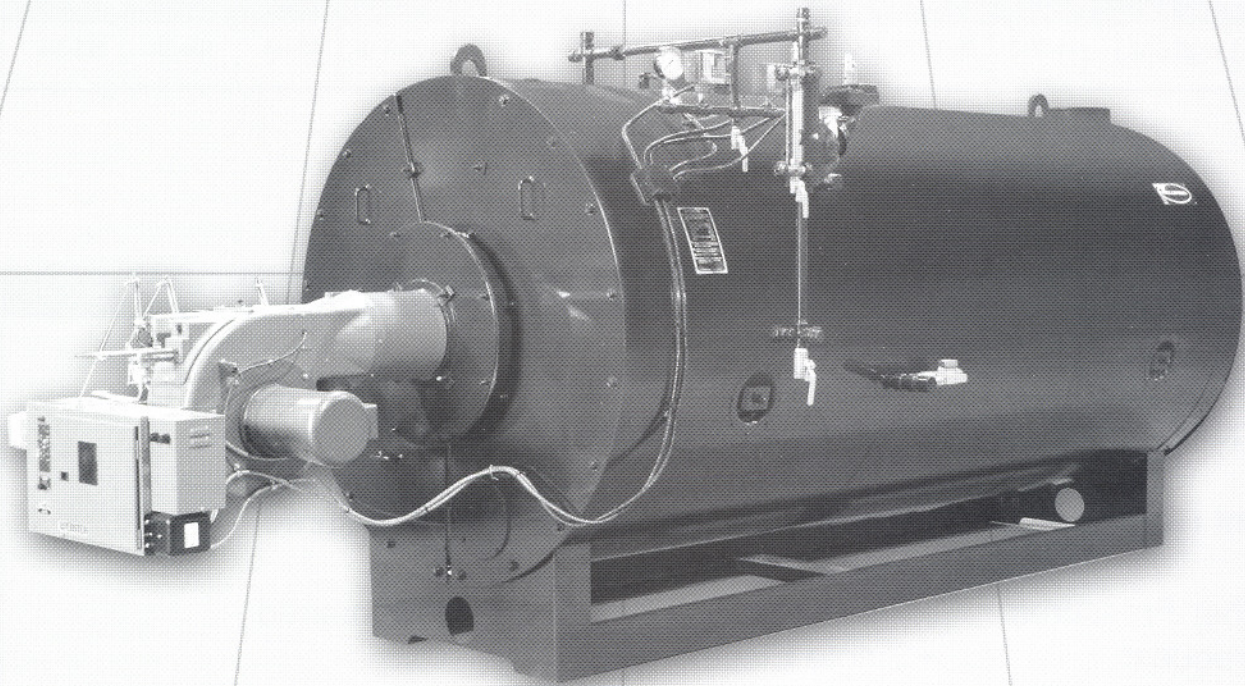


# COLUMBIA

## KEYSTONE SERIES



- Six standard handhole openings
- Hinged rear cover (K-100/150)
- Factory assembled and tested
- Rear Pyrex observation port
- Three pass ASME Code

*You can do BETTER with Columbia*  
GOOD people. BETTER Boilers. BEST value.

# SPECIFICATIONS AND DATA

## BOILER SPECIFICATIONS

MODEL NO.	K-25	K-30	K-40	K-50	K-60	K-70	K-80	K-100	K-125	K-150
Length	7'-2"	8'-0"	9'-11"	11'-6"	11'-9"	12'-11"	14'-5"	13'-1"	15'-4"	16'-7"
Width	5'-6"	5'-6"	5'-6"	5'-6"	6'-0"	6'-0"	6'-0"	6'-11"	6'-11"	6'-11"
Height	5'-2"	5'-2"	5'-2"	5'-2"	5'-8"	5'-8"	5'-8"	6'-8"	6'-8"	6'-8"
Dry Weight (lbs.)	2,400	2,755	3,935	4,640	5,640	6,325	7,015	8,910	10,730	12,090
Wet Weight (lbs.)	3,755	4,405	6,175	7,480	8,840	10,085	11,335	13,830	16,876	19,460
Input MBH	1,046	1,255	1,674	2,092	2,511	2,929	3,348	4,185	5,231	6,277
Output MBH	837	1,004	1,339	1,674	2,008	2,343	2,678	3,348	4,185	5,022
Output #/Hr.	862	1,035	1,380	1,725	2,070	2,415	2,760	3,450	4,312	5,175
Gas Side Pressure Drop In. W.C.	0.10	0.20	0.40	0.65	0.85	1.20	1.50	0.85	1.40	2.00
Furnace Diameter(ins.)	15-1/4	15-1/4	15-1/4	15-1/4	20-1/4	20-1/4	20-1/4	24-3/8	24-3/8	24-3/8
Furnace Length(ins.)	41-7/16	50-11/16	69-7/16	88-3/16	78-9/16	92-9/16	106-9/16	83-3/4	104-3/4	125-3/4

### STANDARD PRESSURES

STEAM: 15 psi (KL), 150 psi (KH)  
WATER: 30 psi (KW)

### OPTIONAL FEATURES

- Special Control Requirements
- Front Hinges
- Higher Pressures on request
- Indicating Lights
- Oversized Supply and Return Connections
- Quick Opening Wedge Pins for Rear Cover
- Single Electric Location
- Stack Thermometer
- Hinged Rear Cover (K-25/80)
- IRI Insured
- FM Insured
- Non-standard Voltage and Hertz Requirements available on request

## COLUMBIA

Manufactured in USA by  
**COLUMBIA BOILER COMPANY**  
P.O. Box 1070, Pottstown, PA 19464  
(610) 323-2700 FAX (610) 323-7292  
www.columbiaboiler.com cbcsales@ptd.net



ASME  
Construction

CONSTRUCTED in accordance with Section IV,  
ASME Boiler & Pressure Vessel Code.