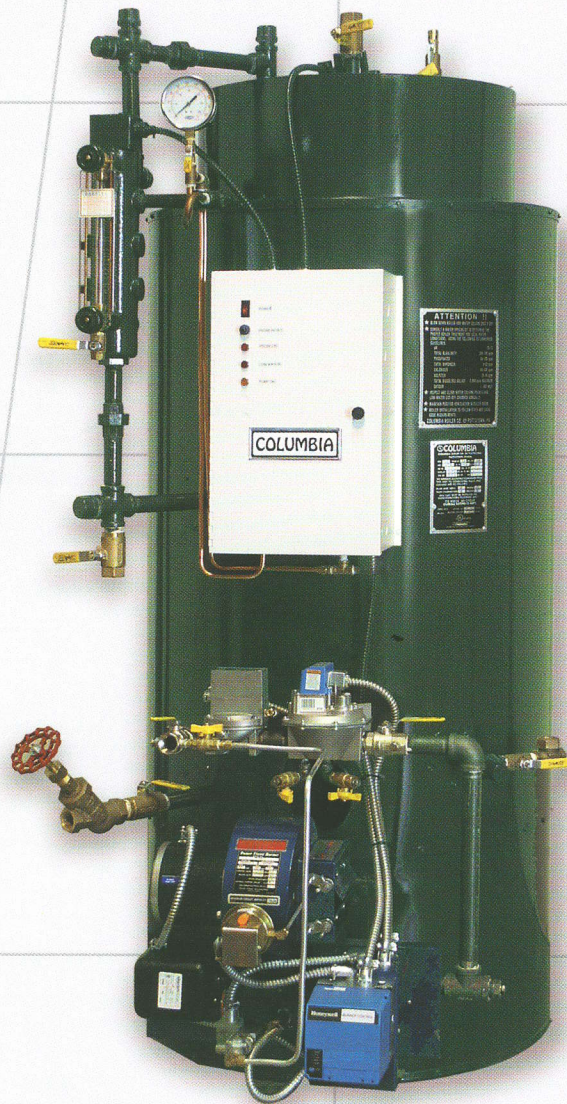


# COLUMBIA

## CT SERIES

### HIGH PRESSURE STEAM BOILER

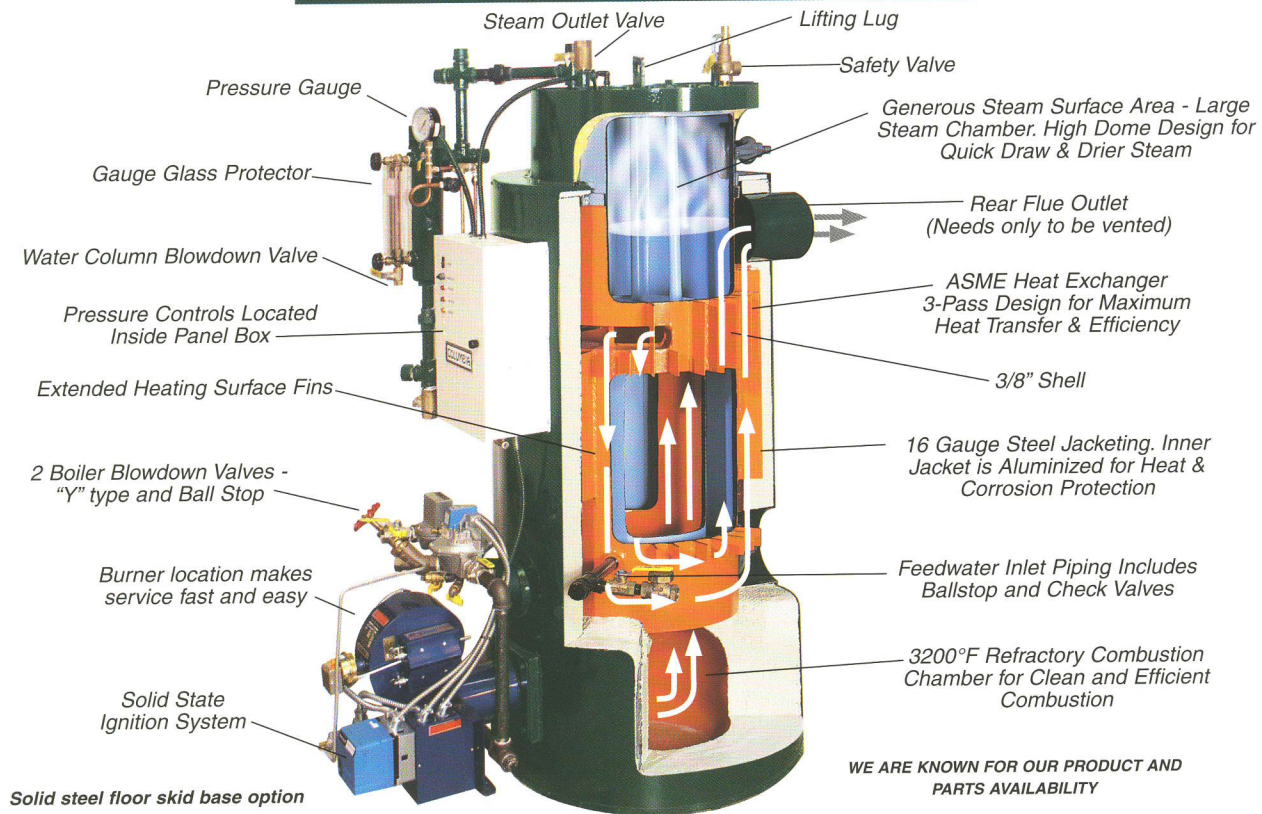


*The Columbia CT boiler features a three-pass, vertical tubeless design that provides an efficient, compact source for high pressure steam output.*

*The CT's advanced features and dependable performance ensure that this boiler is tough enough for your business ... and with superior product and parts availability, you won't lose time to downtime.*

*You can do BETTER with Columbia*  
**GOOD people. BETTER Boilers. BEST value.**

# COLUMBIA ADVANTAGES



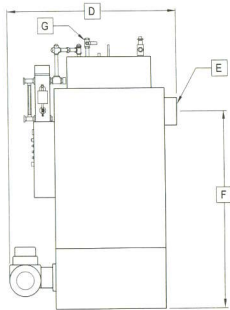
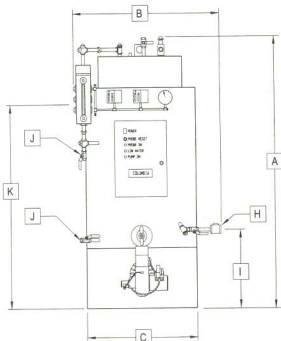
Solid steel floor skid base option

WE ARE KNOWN FOR OUR PRODUCT AND PARTS AVAILABILITY

## CT SPECIFICATIONS AND DATA

MODEL NO	CT-6	CT-10	CT-15	CT-20	CT-25	CT-35	CT-50*
<b>RATINGS:</b>							
Horsepower	6	9.5	15	20	25	35	50
Gas Input (BTU per hour)	252,000	399,000	630,000	840,000	1,050,000	1,470,000	2,100,000
Oil Input (Gals. per hour)	2.00	2.85	4.50	6.00	7.50	10.50	15.00
Output (BTU per hour)	201,600	320,000	504,000	672,000	840,000	1,176,000	1,680,000
Output (Lbs. steam per hour)	207	320	517	690	862	1207	1725
Maximum Allowable Working Pressure	150	150	150	150	150	150	150
Water Capacity (Gals.)	16	27	37	43	59	90	240
Steam Release Surface Area	183 sq.in.	262 sq.in.	389 sq.in.	501 sq.in.	627 sq.in.	817 sq.in.	1,402sq.in.
Hand Hole Sizes	(3) 3x4	(3) 3x3-3/4	(3) 3x3-3/4	(4) 3x3-3/4	(4) 3x3-3/4	(4) 3x3-3/4	(4) 3x3-3/4
<b>BOILER DIMENSIONS:</b>							
<b>A</b> Boiler Height (includes piping)	70"	78"	84"	88"	92"	96"	103"
<b>B</b> Boiler Diameter (left to right, packaged including M & M)	34"	36"	40"	41"	42"	43"	56"
<b>C</b> Boiler Diameter (left to right, less trim & piping)	27"	30"	34"	37"	40"	43"	56"
<b>D</b> Burner to Flue Outlet (approx.)	47"	48"	54"	58"	62"	71"	94"
<b>E</b> Flue Outlet (diameter)	6"	6"	8"	8"	10"	12"	12"
<b>F</b> Flue Outlet to Floor (centerline)	48-1/4"	55"	60"	63-1/2"	65-1/2"	69"	76-1/4"
<b>G</b> Steam Outlet (IPS)	3/4"	3/4"	1"	1"	1-1/4"	1-1/4"	2"
<b>H</b> Feedwater Inlet (IPS)	1/2"	1/2"	1/2"	3/4"	3/4"	3/4"	1"
<b>I</b> Feedwater Inlet to Floor (centerline)	22-3/8"	24-3/8"	24-3/8"	27-3/8"	28-3/8"	13-1/2"	15-1/2"
<b>J</b> Blowdown Outlet (IPS)	1"	1"	1"	1"	1"	1"	1-1/4"
<b>K</b> Normal Water Line to Floor	46-3/4"	54-1/2"	60-1/2"	65"	69"	71-1/2"	81-1/2"
Approx. Floor Space	3' x 5'	3' x 5'	3-1/4' x 5'	3-1/2' x 5-1/2'	4' x 6'	5' x 8'	6' x 10'
<b>CRATED DIMENSIONS:</b>							
Left to Right	38"	41"	43"	44"	44"	45-1/2"	56"
Front to Rear	53"	56"	62"	66"	66"	77"	96"
Height	73"	81"	86"	95"	95"	95"	104"
Approx. Shipping Wt. (skidded & crated)	1580 lb	1900 lb	2450 lb	3075 lb	3400 lb	4650 lb	6200 lb

CT BOILER/BURNER UNITS: Completely assembled, piped, wired & factory tested with steam pressure gauge, water level gauge, gauge cocks with ball checks, gauge glass protector, steam safety valve, steam supply ball valve, boiler and water column blowdown valves, hand hole inspection plate assemblies, feedwater inlet ball valve & check valve, jacket and 3" poured refractory insulation, water column with probe type low water cut-off and pump control, additional probe type low water cut-off with manual reset, steam pressure control, steam hi-limit pressure control with manual reset, feed pump motor contactor, and UL listed burner with safety and operating controls. CSD-1 approval is standard on all boilers.  
 \* The CT 50 is built with a 3" supply fitting and a 3" return fitting for use as a hot water boiler.



ASME  
N.B. Registered



UNDERWRITERS  
LABORATORIES  
INC.  
LISTED



MADE IN THE USA



Manufactured in USA by  
**COLUMBIA BOILER COMPANY**  
 P.O. Box 1070, Pottstown, PA 19464  
 (610) 323-2700 FAX (610) 323-7292  
 www.columbiaboiler.com  
 cbcsales@columbiaboiler.com