



Cast Iron Gas-Fired Water Boilers

CSC SERIES

KEEPING FAMILIES  *WARM SINCE 1936*



Quality Engineered for Efficiency and Dependability

CSC SERIES BOILERS

Gas-Fired/Natural or Propane, Hot Water

The Safety, Comfort and Efficiency of Sealed Combustion Technology!

The CSC Series boilers combine simple, time-proven heat transfer technology with quality components - such as stainless steel burners and cast-iron heat exchangers - delivering years of worry-free performance. With the highest energy efficiency rating and maximum installation flexibility, the CSC Series boiler is the ideal choice for any home.

Sealed Combustion Technology for Safer, Cleaner Heat

The CSC Series boiler draws in outdoor air to mix with fuel in the combustion process. This guarantees consistent air supply and optimizes clean burning. Sealed combustion design not only protects against harmful CO due to poor combustion, but also conserves heated air within the living space.

Installation Flexibility

The CSC boiler has a low profile design and can be installed virtually anywhere. The boiler can be placed adjacent to any exterior wall and vented directly outdoors or vented vertically utilizing stainless steel vent pipe. This makes it easy to incorporate the CSC into new home construction or as a replacement to an existing boiler. The CSC is an ideal choice when converting from electric heat to a hot water system.



Cast Iron Heat Exchanger

The CSC utilizes cast-iron construction because of its durability and efficient heat transfer capabilities. Cast-iron sections and push nipples are an integral part of each CSC boiler. Using only the highest quality cast iron and heat transfer designs, the CSC will provide many

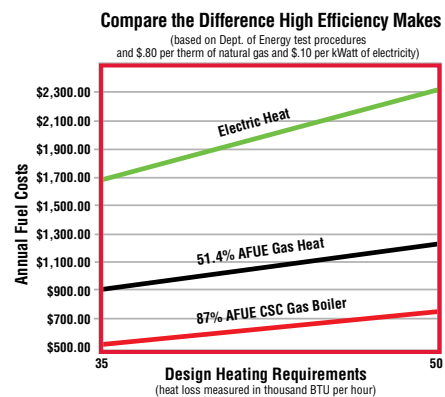
years of efficient and trouble-free operation.

Stainless Steel Burners

Corrosion resistant stainless steel burners are incorporated into each CSC boiler delivering uniform flame patterns that optimize combustion efficiency and quiet operation.

High Energy Efficiency and Lower Home Heating Costs

With an 87% efficiency rating, the CSC boiler offers the highest cast iron to Btu heating capacity ratio in the industry. Once the CSC boiler is installed, the payback will begin immediately due to reduced energy consumption and lower heating costs. Homeowners may even be eligible for utility rebates, depending on geographic location and energy provider.



Factory Tested, Pre-Wired & Packaged

The CSC boiler arrives ready to install. Prior to leaving the factory, nine quality assurance checks ensure trouble-free start-up and performance.

Manufacturer's Lifetime Warranty

The most straightforward warranty in the industry — lifetime warranty to the original homeowner covering the entire heat exchanger — not just the sections.



CSC Boiler Features

- Protective Wall Thimble
- UL-Approved® Safety-Tested Exhaust Fan
- Computer Designed Heat Transfer Pin Configuration
- Pressure Relief Valve
- A.S.M.E.-Approved Cast-Iron Sections (Lifetime Warranty)
- Solid Cast-Iron Heat Exchanger
- Positive Vent Safety Shut-Off
- Metal Connecting Push Nipples
- Whisper-Quiet Flame
- Corrosion-Resistant Stainless Steel Burners
- Reliable Electronic Pilot Ignition Sensor
- Safety Redundant Valve
- Optional Combustible Floor Installation Kit

CSC Additional Boiler Features

- 87% AFUE Efficiency
- Sealed Combustion Technology
- Venting Flexibility - Side Wall or Vertical
- Quiet Operation
- 3 Sizes-Capacities From 50,000 to 140,000 BTU/h
- Reliable Honeywell Ignition Components
- Made in America

CSC SERIES BOILERS

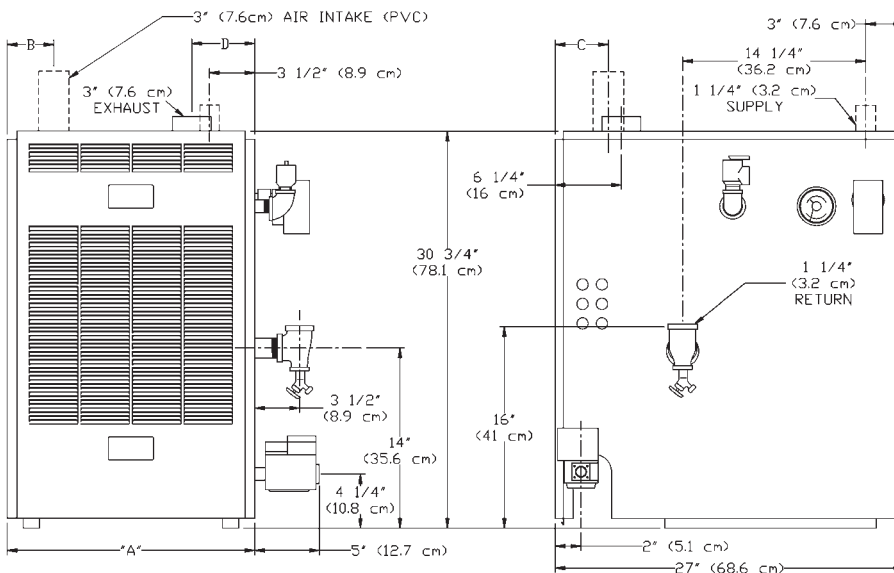
CAST-IRON, DIRECT VENT SEALED COMBUSTION, GAS-FIRED, HOT WATER BOILER

BOILER NO.	A.G.A. INPUT BTU/HR.	HEATING CAPACITY BTU/HR.	I=B=R NET OUTPUT BTU/HR.	NATURAL GAS INLET	DIMENSIONS				SUP. & RET. TAPPINGS	NO. OF BURNERS	SHIPPING WEIGHT	AFUE RATINGS
					A	B	C	D				
CSC3	50,000 (14.7 KW)	44,000 (12.9 KW)	38,000 (11.1 KW)	1/2" (1.27 cm)	15 1/8" (38 cm)	3 1/2" (9 cm)	3 1/2" (9 cm)	5" (12.7 cm)	1 1/4" (3.2 cm)	2	315	87%
CSC4	100,000 (29.3 KW)	87,000 (25.5 KW)	76,000 (22.3 KW)	1/2" (1.27 cm)	19" (48 cm)	3 1/2" (9 cm)	3 1/2" (9 cm)	6 1/2" (16.5 cm)	1 1/4" (3.2 cm)	3	365	87%
CSC5	140,000 (41.0 KW)	122,000 (35.7 KW)	107,000 (31.3 KW)	1/2" (1.27 cm)	22 7/8" (58 cm)	4 1/4" (11 cm)	4 1/4" (11 cm)	8 3/4" (21.3 cm)	1 1/4" (3.2 cm)	4	430	87%

STANDARD EQUIPMENT: Boiler jacket, cast-iron boiler, limit control, removable transformers, plug-in relay, thermostatic gauge, circulator, main gas burners, hot surface pilot, A.S.M.E. relief valve, drain cock, induced draft fan, safety pressure switch, and combination intake/exhaust termination kit.

Specifications and dimensions are subject to change without notice.

DIMENSIONS



Tested for 100 lbs. ASME Working Pressure

EXPLANATION NOTES

For equivalent square feet of radiation, divide I=B=R output by 150.

All boilers are design certified for installation on non-combustible floors. For installation on combustible floors, use combustible floor kit.

This boiler is a Direct Vent Designed Certified appliance which requires a special horizontal through-the-wall venting system. Only HEAT-FAB®, SAF-T-VENT™, FLEX-L® STAR-34™,

PRO-TECH™, FasNSeal®, and Z-FLEX® Z-VENT™ venting material products shall be used.

A condensate tee/drain is only needed when horizontal vent lengths exceed 10 feet for vertical venting.

Consult installation instructions for maximum vent lengths and proper configurations.

MEA# 131-01-E

YOUR ASSURANCE OF QUALITY

Columbia Boilers products are designed, tested, and assembled to ensure that you get the very best in home heating and cooling comfort, and value. Each one meets or exceeds all recognized safety, performance and efficiency standards.



For more information on Columbia Boilers heating products contact your local Columbia Boilers distributor or call Columbia Boilers at (410) 242-5300 or (610) 323-9200.

Columbia Heating Products 1409 Rome Road, PO Box 24202, Baltimore, MD 21227 Ph: (410) 242-5300 Fax: (410) 247-5026 Web Site: www.columbiaheating.com

Columbia Heating Supply 390 Old Reading Pike, PO Box 377, Pottstown, PA 19464 Ph: (610) 323-9200 Fax: (610) 323-8532

Form No. CSC 2/02