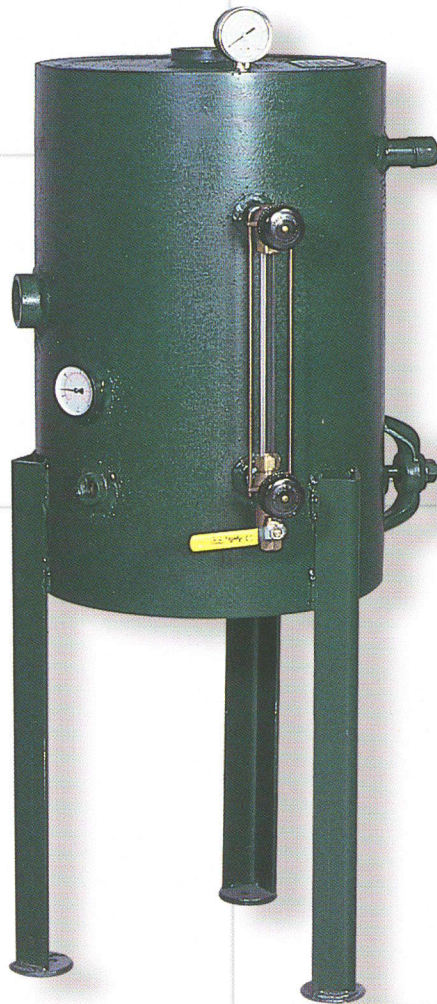


COLUMBIA

BLOWDOWN SEPARATORS



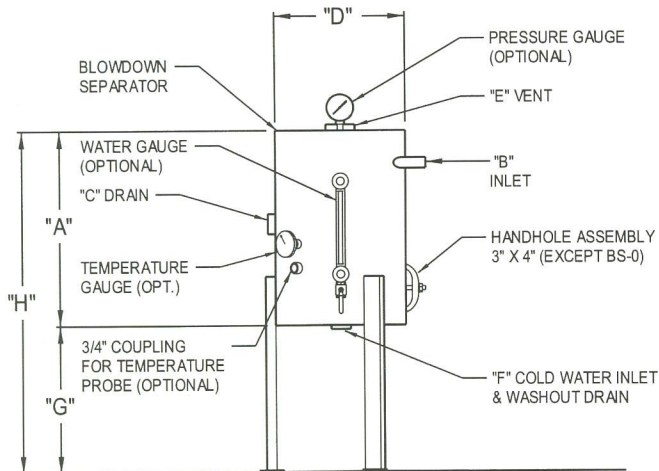
In addition to design features that make it safe and efficient to operate, our blowdown separator is backed by Columbia's trusted reputation as an industry leader in high pressure steam equipment.

You can do BETTER with Columbia

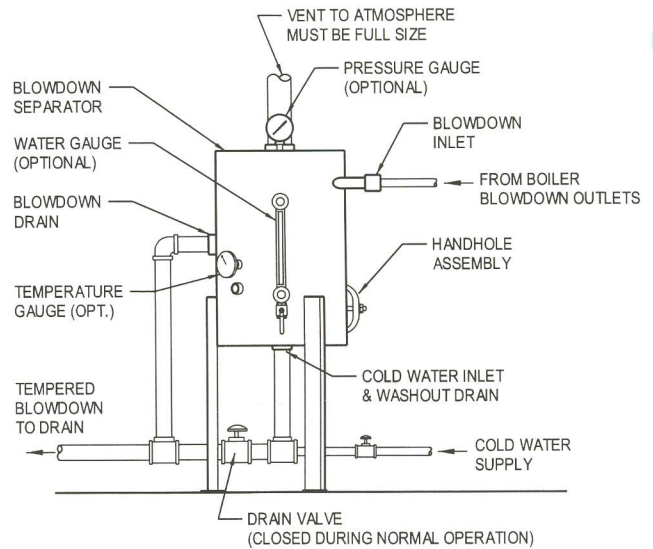
GOOD people. **BETTER** Boilers. **BEST** value.

SPECIFICATIONS AND DATA

DIMENSIONS AND FEATURES



SUGGESTED HOOK-UP TO BOILER



MODEL	BOILER HP (MAX)	DIMENSIONS								SHIPPING WEIGHT
		A	B	C	D	E	F	G	H	
BS-0	15	18"	1"	2"	12"	2"	2"	14"	32"	125
BS-1	25	24"	1"	2"	16"	2-1/2"	2"	18"	42"	230
BS-2	60	30"	1-1/4"	2"	16"	3"	2"	18"	48"	260
BS-3	100	36"	1-1/2"	3"	16"	4"	2"	18"	54"	290
BS-4	150	42"	2"	3"	16"	4"	2"	18"	60"	320
BS-5	200	48"	2"	3"	16"	4"	2"	18"	66"	350

The Columbia separator design incorporates a water seal at the outlet which permits the operator to introduce cold water from the bottom to mix with the hot water and boiler steam blowdown in the separator. This reduces the outlet temperature to a level that makes it safe for discharge.

If the separator is less than half full of water after the boiler is blown down, cold tap water must be added to bring the water level to the halfway mark before the next blowdown.

Maximum boiler working pressure: 250 psi
Maximum blowdown separator pressure: 65 psi

Blowdown Separators are sized in accordance with National Board Standards.

RECOMMENDED OPTIONAL EQUIPMENT

0-100 lb. Pressure Gauge
0-200° Temperature Gauge
Water Level Gauge
Automatic Cooling Bellows Type Valve



Manufactured in USA by
COLUMBIA BOILER COMPANY
P.O. Box 1070, Pottstown, PA 19464
(610) 323-2700 FAX (610) 323-7292

www.columbiaboiler.com email: cbcsales@columbiaboiler.com



CONSTRUCTED in accordance with Section VIII, Div. 1, ASME Boiler & Pressure Vessel Code.